

ECONOMY  
INNOVATION

space  
flexibility

freedom creativity

light

# ardis

the 'work from home' garden office



450



## ardis 450



### INTERNAL DIMENSIONS

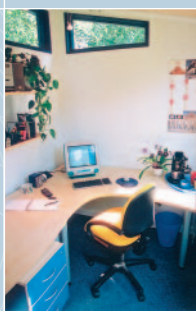
- 2.4M X 1.8M (8' X 6')

### KEY SPECIFICATIONS

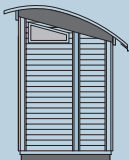
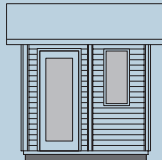
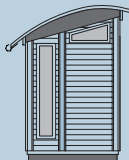
- FULL WINDOW
- OPENING SASH WINDOW
- 2 HIGH LEVEL WINDOWS

### FURNITURE SPECIFICATIONS

- WE HAVE DESIGNED A HIGHLY EFFICIENT LAYOUT TO MAXIMISE THE USE OF SPACE IN THE ARDIS 450. A SPECIFIC RANGE OF FURNITURE AND OFFICE TECHNOLOGY IS INCLUDED IN THE PRICE. PLEASE SEE THE 450 LEAFLET OR OUR WEBSITE FOR FULL SPECIFICATIONS.



The Ardis 450 interior is designed to maximise space. Feel the freedom to work on your terms.



ABOVE: A typical 450 configuration. Additional windows may be fitted to your own unique specification.

SUPPLIED AS STANDARD WITH 450



Ergonomically designed versatile and elegant furniture including under desk pedestal and task operator chair.

Solid wood shelving 32 mm thick with clear stain finish to match furniture and ceiling.

## ardis – the award winning garden office\*

The Ardis is a relocatable professional office offering a low cost and tax advantageous alternative to a home extension. The patented modular construction with its own foundations (no builders or concrete required) enables most models to be erected in one day with the minimum of fuss in the most inaccessible of places. The well insulated double glazed Ardis comes complete with electrics, heating, lighting, carpets and furniture.

**JUST PLUG IN AND WORK!**

## why pay rent?

You can have your own Ardis 450 for as little as **£51 per week** – see the price list and website for the latest details.

\* Times and Gasetner Digital Office Collection.



 01647 432575  
for further information or to place an order for an **ardis**

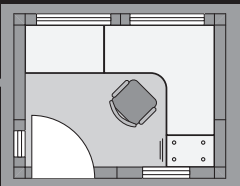
# ardis 450

## detailed specifications



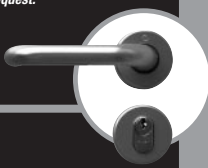
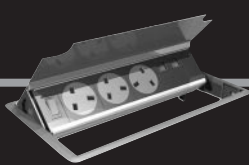
- ✓ **INTERNAL DIMENSIONS** : 2.408m x 1.806m (approx. 8' x 6')
- ✓ **FOUNDATIONS** : Preservative treated timber sleepers.
- ✓ **FLOOR** : Plywood flooring on timber joists, polythene vapour barrier and insulation.
- ✓ **WALLS** : MDF inner face with white textured finish, CLS timber studwork, vapour barrier, insulation, breather paper, cavity zone, external interlocking cladding.
- ✓ **EXTERNAL CLADDING** : Horizontal interlocking boarding.
- ✓ **ROOF** : Curved roof manufactured in maintenance free GRP with integral gutter, insulation, vapour barrier, breather membrane and natural timber lining to vaulted ceiling.
- ✓ **RAINWATER GOODS** : Gutter is integral with the roof and one rainwater downpipe is provided to discharge to ground level.
- ✓ **WINDOWS & DOORS** : High quality fully draught stripped softwood doors and windows, double glazed with clear laminated glass as standard. Trickle ventilators over opening window. Fully glazed door has a storm proof mobility threshold and a clear minimum width of 800mm to comply with M2 1.35 of the Building Regulations (Access and facilities for disabled people). 2 x high level windows, 1 x long narrow window, 1 x opening window and 1 x fully glazed door.
- ✓ **PRESERVATIVE** : Where required timbers will be preservative treated. Generally external timbers and timber in contact with the ground will be pressure impregnated with c.c.a. (Tanalith or Celcure).

- ✓ **DECORATION** : Windows and doors would be finished with 'Sadolin Superdec' to a colour of your choice. External cladding would be finished with 'Sadolin Superdec' to a colour of your choice or alternatively a natural timber finish. Internal walls have a white vinyl textured finish and the timber ceiling has a clear matt lacquer.
- ✓ **VENTILATION** : Wall mounted fresh air ventilator. Trickle vent over opening window.
- ✓ **HEATING & ELECTRICS** : 3 x low energy adjustable dichroic luminaires mounted on tensioned wires at ceiling level. Thermostatically controlled wall mounted 0.75kW panel convactor heater with timer. Desk top mounted cable management system comprising of three electrical sockets and two data points. 1 x wall mounted power socket. 1 x consumer unit.
- ✓ **CARPET** : Wall to wall fitted carpet in a choice of colours. Carpet is general contract cord with a rot proof, water resistant gel backing.
- ✓ **FURNITURE & SHELVING** : 1 x task operator chair with arms, safety gas lift, back rest height adjustment, seat tilt and choice of colour.
- ✓ **2.4 x 1.8 (8' x 6')** continuous curved workstation with fixed under desk 2 drawer pedestal (1 x pen drawer and 1 x filing drawer).
- ✓ **2.4m (8')** solid wood shelving 32 mm thick with clear stain finish to match furniture and ceiling fitted to longest wall.
- \* **BLINDS (OPTIONAL)** : White venetian blinds tailored to suit each individual window are available for fitting to your Ardis on request.



### OFFICE PACK FURNITURE SYSTEM

The Ardis 450 is designed to maximise space and comes complete with the highest quality ergonomic modular furniture. You also have the option to choose alternative configurations for a small additional cost.



Do not forget that our professional design team are on hand to advise and help you choose your own particular furniture layout or even your own special sized individual building - our unique modular system allows you to decide your own building size and design your own furniture layout.

## your guarantee

ROOF | WALLS | FOUNDATIONS > 10 YEARS

FURNITURE | ELECTRICAL EQUIPMENT | FIXTURES AND FITTINGS > 12 MONTHS



01647 432575

for further information or to place an order for the **ardis**



www.ardisdesign.co.uk

**ardis**

42 THE SQUARE, CHAGFORD, DEVON TQ13 8AH

TEL: 01647 432575 FAX: 01647 432676

e-mail: info@ardisdesign.co.uk

DESIGN & PRODUCTION : AIRSHIP 01566 784128 www.air-ship.co.uk  
PRINT : BLUE SKY, BARNSTAPLE E & OE Ardis Design Limited 2002

HAVE YOU RECEIVED THE PRICE LIST?  
LATEST PRICES AND OPTIONS ARE  
AVAILABLE ONLINE

