

ECONOMY  
INNOVATION

flexible  
structure

freedom creativity

light

# ardis

the professional office solution



## SPACE+

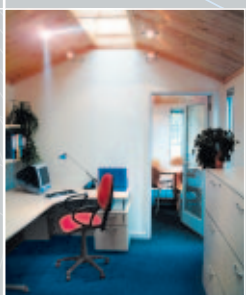
### ardis SPACE+

#### INTERNAL DIMENSIONS

- AS BIG AS YOU LIKE!
- PITCHED ROOF DESIGN
- SECURITY GLAZED WINDOWS FITTED TO YOUR REQUIREMENTS IN EITHER OPENING OR NON-OPENING CONFIGURATIONS

#### SPECIFICATIONS

A TRUE ARCHITECTURAL SOLUTION! DESIGNED TO YOUR SPECIFICATION WITH ANY NUMBER OF WINDOWS, ROOF LIGHTS, POWER SOCKETS, HEATERS, LIGHTING AND FURNITURE PACKAGE! THE SPACE+ IS BASED ON OUR UNIQUE PATENTED MODULAR PANEL CONSTRUCTION COUPLING HIGH QUALITY WITH LOW COST. PLEASE CALL OUR TEAM TO DISCUSS YOUR REQUIREMENTS.



Every SPACE+ interior is tailored to your unique requirements with a bespoke ergonomic solution. This enables full disabled access (as with all models in the Ardis range) and total comfort. In the Ardis illustrated above, the high timber clad ceiling adds to the sensation of space, light and freedom.

#### SUPPLIED AS STANDARD WITH SPACE+

- You have the opportunity to select two key colours for your Ardis. Mix and match for the outer wall and joinery detail. The illustrations on our website offer you an idea on how to design your Ardis.



#### OPTIONAL WITH SPACE+

- Ergonomically designed versatile and elegant furniture including a full range of matching filing cabinets, under desk pedestals and cupboards. Solid wood shelving 32 mm thick with clear stain finish to match furniture and ceiling.

### ardis – the award winning garden office\*

The Ardis is a relocatable professional office offering a low cost and tax advantageous alternative to a home extension. The patented modular construction with its own foundations (no builders or concrete required) enables most models to be erected in one day with the minimum of fuss in the most inaccessible of places. The well insulated double glazed Ardis comes complete with optional electrics, heating, lighting, carpets and furniture.

**JUST PLUG IN AND WORK!**

### why pay rent?

You can have your own Ardis SPACE+ at a highly competitive weekly rate – call us **now** for more information.

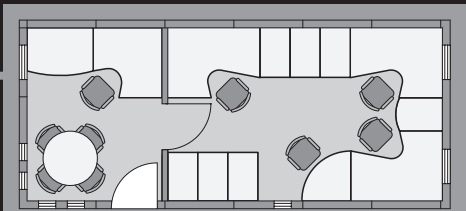


01647 432575  
for further information or to place an order for an **ardis**

\* Times and Gasteller Digital Office Collection.

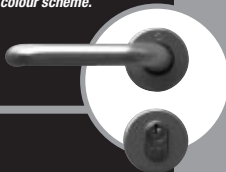
## key specifications & options

- ✓ Foundations (all you need to provide is a firm level site).
- ✓ Supply and erection by our own skilled teams.
- ✓ Full floor insulation and vapour barrier.
- ✓ Solid natural timber ceiling fully insulated with vapour barrier and weather resistant breather membrane.
- ✓ Solid timber (Canadian) stud walls with full insulation, vapour barrier, breather membrane and cavity zone.
- ✓ Durable textured white vinyl lining to interior walls, fire rated to BS476.
- ✓ Adjustable wall vent.
- ✓ Maintenance free long life roof with integral gutter, rainwater downpipe and solid timber fascia.
- ✓ Double glazing in laminated safety glass to all doors and windows.
- ✓ Selected softwood windows with solid timber rebated and mitred perimeter trim.
- ✓ Selected softwood fully glazed door, solid timber rebated perimeter trim and mobility threshold (width of door complies with building regulation requirements for wheelchair access).
- ✓ Euro cylinder deadlock with safety thumbturn and high quality satin stainless steel ball race hinges.
- ✓ Sadolin Superdec premium quality long lasting protection to walls and joinery with a choice from a range of 50 different colours.
- ▽ ARDIS ADDITIONS – options for your office
- \* Velux™ or Pyramid roof windows.
- \* Ergonomically designed versatile and elegant furniture including a full range of matching filing cabinets, under desk pedestals and cupboards.
- \* Task operator chair with arms, safety gas lift, back rest height adjustment, seat tilt and choice of colour.
- \* Solid wood shelving 32mm thick with clear stain finish to match furniture and ceiling.
- \* Desk top mounted Powerdock cable management system incorporating electrical sockets and data points in a well designed compact unit.
- \* Low energy dichroic luminaire adjustable downlighters.
- \* Electrical consumer unit.
- \* Double power sockets.
- \* High efficiency thermostatically controlled wall mounted convector heater.
- \* Hard wearing carpet with a water resistant gel backing available in a wide range of choice of colours to co-ordinate with your colour scheme.



### EXAMPLE OFFICE LAYOUT

This layout example illustrates a 12m x 3m (40' x 10') Ardis. The office is divided into two distinct areas – the first area which is used for day to day work and the second which is generally used as a reception / meeting area. The unique modular flat panel construction enables you to expand your Ardis at any time in the future!



Do not forget that our professional design team are on hand to advise and help you choose your own particular furniture layout or even your own special sized individual building – our unique modular system allows you to decide your own building size and design your own furniture layout.



## your guarantee

ROOF | WALLS | FOUNDATIONS > 10 YEARS

FURNITURE | ELECTRICAL EQUIPMENT | FIXTURES AND FITTINGS > 12 MONTHS



01647 432575

for further information or to place an order for the **ardis**



[www.ardisdesign.co.uk](http://www.ardisdesign.co.uk)

**ardis**

42 THE SQUARE, CHAGFORD, DEVON TQ13 8AH

TEL: 01647 432575 FAX: 01647 432676

e-mail: [info@ardisdesign.co.uk](mailto:info@ardisdesign.co.uk)

DESIGN & PRODUCTION : AIRSHIP 01566 784128 : [www.air-ship.co.uk](http://www.air-ship.co.uk)  
PRINT : BLUE SKY, BARNSTAPLE E & OE Ardis Design Limited 2002

HAVE YOU RECEIVED THE PRICE LIST?  
LATEST PRICES AND OPTIONS ARE  
AVAILABLE ONLINE

